



Fórum Eugénio de Almeida

Culture — Museums / Exhibition rooms



📍 Street

Largo do Conde de Vila Flor, 7000-804
Évora (São Mamede, Sé, São Pedro e Santo Antão), Évora (Évora)
Portugal

☎ Contact

Tel +351 266 748 350
forumea@fea.pt
<http://www.fea.pt/forum>

📅 Created by

Técnico AP - IB 10/01/2018

📅 Last modification by

Técnico AP - IB 07/01/2020

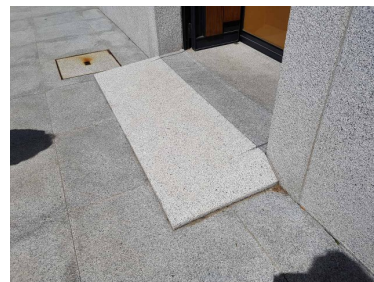


The accessibility of this tourism resource has been analyzed by experts

General Information

O Fórum Eugénio de Almeida oferece um programa de exposições que dá a conhecer grandes nomes das artes plásticas mundiais do Séc. XX, criando uma oportunidade de aproximação do público ao universo artístico do seu tempo.

Entrance



Entrance: Steps / stairs, inclined plane / ramp

Stair information

Number of steps: 1

Ramp information

The slope makes the ramp : Can be used autonomously

✓ Name of the tourist resource clearly visible and legible

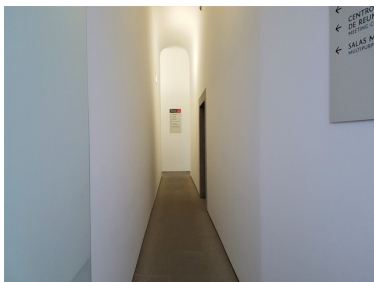
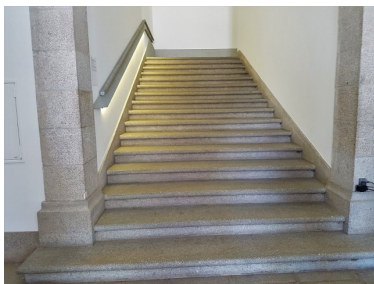
The entranceway analysed is: The alternative one

Width of the entrance door: Greater than or equal to 78 cm

Customer Service Area

✓ Customer service desk

Inside circulation



Wheelchair circulation: Total

Adequate lighting: Yes

Signposting: Yes

Characteristics

Signs: With colour-contrasted texts

✓ Establishment with more than one floor

Vertical itinerary

Transit between floors via: Lift / lifts, steps / stairs

Lift information

Dimensions of the cubicle: Big

✓ With audio information

✓ With visual information

Lift buttons: In braille, highly embossed, of contrasting colour

Stair information

Number of steps: More than 3

Height of the step in cm: 16

✓ Hand rail

Adapted toilet in common areas

- ✓ Toilet suitable for PRM

Characteristics



Access without changes in floor level: Yes

Door width: Greater than or equal to 78 cm

Door opening: Outward

Free turning space ? 150 cm of diameter: Yes

Clear space to transfer to the toilet: Yes

Characteristics

The space is at least 80 cm or greater: Right-hand side

Height of the toilet seat: Standard (between 40 and 45 cm)

It has support bar(s): Yes

Information

Toilet grab bars: Left-hand side, right-hand side

The bars on the left-hand side are: Fixed

The bars on the right-hand side are: Folding

Sink: With mixer tap, without pedestal

Services and amenities



Sufficient information provided about accessibility to the tourist resource : Yes

Adapted visits or activities for people with disabilities: Yes

- ✓ Documentation with information about the tourist resource

Brochures, dossiers, menus, etc.

Features of the documentation: Easy to read