



Posto de Informação Turística de Bragança

Tourist offices — Tourist offices



📍 Street

Avenida Cidade de Zamora, 5300-111
Sé, Santa Maria e Meixedo, Bragança (Bragança)
Portugal

☎ Contact

Tel +351 273 381 273
turismo@cm-braganca.pt
<http://www.cm-braganca.pt>

📅 Created by

Técnico AP - IB 19/06/2018

📅 Last modification by

Técnico AP - IB 05/09/2018



The accessibility of this tourism resource has been analyzed by experts

General Information

Horário de Funcionamento: de 1 de Outubro a 31 de Maio | Segunda a Sexta-feira das 09:00H às 12:30H e das 14:00H às 17:00H | Sábado das 10:00H às 12:30H || de 1 de Junho a 30 de Setembro | Segunda a Sábado das 09:30H às 12:30H e das 14:00 às 18:00H

Entrance



Entrance: Steps / stairs

Stair information

Number of steps: 1

Height of the step in cm: 19

✓ Name of the tourist resource clearly visible and legible

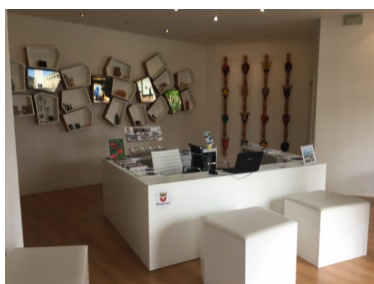
The entranceway analysed is: The main one

Width of the entrance door: Greater than or equal to 78 cm

Customer Service Area

✓ Customer service desk

Characteristics



✓ Near the entrance

✓ Height suitably adapted for wheelchair users

Inside circulation

Wheelchair circulation: Total

Adequate lighting: Yes

✓ Without elements that can suppose an obstacle for a person with a visual disability

Services and amenities

✓ Documentation with information about the tourist resource

✓ Customer service staff

Outside areas

