



Teatro de Rojas

Leisure — Theatres / Cinemas / Concert halls



Street
Plaza Mayor, s/n 45001
Toledo, Toledo (Castilla - La Mancha)
Spain

Created by
PREDIF Técnico 3 23/10/2018

Contact
Tel 925 21 57 08
inforojas@telefonica.net
<http://www.teatroderojas.es/>

Last modification by
PREDIF Técnico 3 23/10/2018



Information about the accessibility of this tourist resource has been provided by users

General Information

El Teatro Real es un antiguo teatro reformado, que conserva su decoración antigua. En la planta baja está la taquilla para comprar las entradas, el patio de butacas, la platea con más asientos y los servicios adaptados. En las plantas 2 y 3 están la zona de butacas y el anfiteatro. Si tienes discapacidad física, puedes recorrer todo el teatro. Hay ascensor, tienes reservado un espacio para personas en silla de ruedas en el patio de butacas en la planta baja.

Entrance



Entrance: Steps / stairs, inclined plane / ramp, mobile ramp (available on request)

Stair information

Number of steps: More than 3

Height of the step in cm: 17

Ramp information

The slope makes the ramp : Can be used with help from another person

- ✓ Hand rail
- ✓ Name of the tourist resource clearly visible and legible

The entranceway analysed is: The main one

Width of the entrance door: Greater than or equal to 78 cm

Customer Service Area

- ✓ Customer service desk

Characteristics

- ✓ Near the entrance

Inside circulation



Wheelchair circulation: Partial

Adequate lighting: No

Signposting: Yes

✓ Establishment with more than one floor

Vertical itinerary

Transit between floors via: Lift / lifts, steps / stairs

Lift information

Dimensions of the cubicle: Small

✓ With visual information

Lift buttons: Of contrasting colour

✓ Lift buttons at a suitable height for wheelchair users

Stair information

Number of steps: More than 3

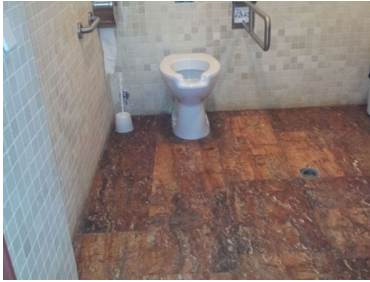
Height of the step in cm: 14-16

✓ Hand rail

Adapted toilet in common areas

- ✓ Toilet suitable for PRM

Characteristics



Access without changes in floor level: Yes

Door width: Greater than or equal to 78 cm

Door opening: Sliding

Free turning space ? 150 cm of diameter: Yes

Clear space to transfer to the toilet: Yes

Characteristics

The space is at least 80 cm or greater: Left-hand side

Height of the toilet seat: High (greater than or equal to 45 cm)

It has support bar(s): Yes

Information

Toilet grab bars: Left-hand side, right-hand side

The bars on the left-hand side are: Folding

The bars on the right-hand side are: Fixed

Sink: With mixer tap

Services and amenities

Magnetic induction loop: No

- ✓ Customer service staff

Staff training

Personal trained in attention to people with disabilities : No

Personal available to support people with specific needs: No

Personal with knowledge of Sign Language: No

- ✓ Reserved spaces / seats

Seats / Reserved Seats

- ✓ Seats PRM

Outside areas

Sidewalks: Without obstacles

Uniform and anti-slip pavement: Yes

Rating of establishment / place of interest

Rate 1 to 5 general accessibility of the establishment: 3 - Average

Rate 1 to 5 care you received: 4 - Good